

ABSEL

PREMIUM BATTERIES



**EXPLORE
THE WORLD
OF NEW ENERGY!**



ADVANCED BATTERIES
FOR PASSENGER AND LIGHT
COMMERCIAL VEHICLES



ABSEL
PREMIUM BATTERIES

ADVANCED BATTERIES

WITH LIQUID ELECTROLYTE

SELECTION | SELECTION EVO

The ABSEL **SELECTION** and ABSEL **SELECTION EVO** batteries, utilizing advanced SLI technology, are specifically designed for passenger cars and light commercial vehicles of all classes. Thanks to advanced calcium (Ca) alloy grid technology, they provide instant engine start and reliable power delivery at all times.

A safe and maintenance-free design, along with increased resistance to vibrations, ensures high performance across a wide temperature range. The ABSEL **SELECTION** and ABSEL **SELECTION EVO** product lines are tailored to various levels of vehicle equipment and energy consumption.



KEY ADVANTAGES



High performance in a wide temperature range



Increased resistance to vibration



Performance exceeds regular batteries by 25%



Safe and maintenance-free design



Advanced calcium (Ca) alloy grid technology

ABSEL
PREMIUM BATTERIES

SELECTION

JIS

Asian type



The ABSEL **SELECTION** batteries are designed to offer 25% greater performance compared to standard batteries, along with strong vibration resistance and the ability to function effectively across different temperature ranges.

B20 (NS40)



B00
Bottom
mount

B01
Bottom
mount

B24 (NS60)



1 Terminal type

3 Terminal type

D20



D23



B00
Bottom
mount

B01
Bottom
mount

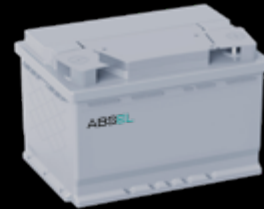
D26 (N50)



B00
Bottom
mount

B01
Bottom
mount

D31 (N70)



Тип Корпуса	Артикул	Код	Емкость при 20-ти часовой (Ач)	Пусковой ток EN (А)	Пусковой ток SAE (А)	Полярность	Тип клеммы	Нижнее крепление	Длина (мм)	Ширина (мм)	Высота без учета клеммы	Высота (мм)	Масса в залитом виде (кг)
B20 (NS40)	QX 542 200	B20.35.024.G	35	240	260	0	3	B01	196	134	202	222	9,4
	QX 542 201	B20.35.024.H	35	240	260	1	3	B01	196	134	202	222	9,4
	QX 542 202	B20.35.028.G	35	280	300	0	3	B01	196	134	202	222	9,6
	QX 542 203	B20.35.028.H	35	280	300	1	3	B01	196	134	202	222	9,6
	QX 542 204	B20.40.033.G	40	330	300	0	3	B01	196	134	202	222	10,2
	QX 542 205	B20.40.033.H	40	330	350	1	3	B01	196	134	202	222	10,2
B24 (NS60)	QX 542 240	B24.42.030.A	42	300	320	0	1	B00	237	127	201	222	11,5
	QX 542 241	B24.42.030.B	42	300	320	1	1	B00	237	127	201	222	11,5
	QX 542 242	B24.45.030.A	45	300	320	0	1	B00	237	127	201	222	11,6
	QX 542 243	B24.45.030.B	45	300	320	1	1	B00	237	127	201	222	11,6
	QX 542 244	B24.45.030.E	45	300	320	0	3	B00	237	127	201	222	11,6
	QX 542 245	B24.45.030.F	45	300	320	1	3	B00	237	127	201	222	11,6
	QX 542 246	B24.45.036.A	45	360	400	0	1	B00	237	127	201	222	12,1
	QX 542 247	B24.45.036.B	45	360	400	1	1	B00	237	127	201	222	12,1
	QX 542 248	B24.45.036.E	45	360	400	0	3	B00	237	127	201	222	12,1
D20	QX 542 206	D20.50.042.C	50	420	450	0	1	B01	203	175	183	202	12,0
	QX 542 207	D20.50.042.D	50	420	450	1	1	B01	203	175	183	202	12,0
D23	QX 542 230	D23.60.045.A	60	450	480	0	1	B00	232	173	204	225	15,0
	QX 542 231	D23.60.045.B	60	450	480	1	1	B00	232	173	204	225	15,0
	QX 542 232	D23.60.045.C	60	450	480	0	1	B01	232	173	204	225	15,0
	QX 542 233	D23.60.045.D	60	450	480	1	1	B01	232	173	204	225	15,0
	QX 542 234	D23.60.052.A	60	520	550	0	1	B00	232	173	204	225	15,5
	QX 542 235	D23.60.052.B	60	520	550	1	1	B00	232	173	204	225	15,5
	QX 542 236	D23.60.052.C	60	520	550	0	1	B01	232	173	204	225	15,5
	QX 542 237	D23.60.052.D	60	520	550	1	1	B01	232	173	204	225	15,5
D26 (N50)	QX 542 260	D26.70.054.A	70	540	600	0	1	B00	260	173	204	225	17,0
	QX 542 261	D26.70.054.B	70	540	600	1	1	B00	260	173	204	225	17,0
	QX 542 262	D26.70.054.C	70	540	600	0	1	B01	260	173	204	225	17,0
	QX 542 263	D26.70.054.D	70	540	600	1	1	B01	260	173	204	225	17,0
	QX 542 264	D26.70.063.A	70	630	680	0	1	B00	260	173	204	225	17,4
	QX 542 265	D26.70.063.B	70	630	680	1	1	B00	260	173	204	225	17,4
	QX 542 266	D26.70.063.C	70	630	680	0	1	B01	260	173	204	225	17,4
	QX 542 267	D26.70.063.D	70	630	680	1	1	B01	260	173	204	225	17,4
D31 (N70)	QX 542 319	D31.70.053.C	70	530	550	0	1	B01	306	175	202	224	20,0
	QX 542 310	D31.70.053.D	70	530	550	1	1	B01	306	175	202	224	20,0
	QX 542 311	D31.80.067.C	80	670	720	0	1	B01	306	175	202	224	20,5
	QX 542 312	D31.80.067.D	80	670	720	1	1	B01	306	175	202	224	20,5
	QX 542 313	D31.90.066.C	90	660	720	0	1	B01	306	175	202	224	22,0
	QX 542 314	D31.90.066.D	90	660	720	1	1	B01	306	175	202	224	22,0
	QX 542 315	D31.90.072.C	90	720	750	0	1	B01	306	175	202	224	22,4
	QX 542 316	D31.90.072.D	90	720	750	1	1	B01	306	175	202	224	22,4
	QX 542 317	D31.100.076.C	100	760	800	0	1	B01	306	175	202	224	23,5
	QX 542 318	D31.100.076.D	100	760	800	1	1	B01	306	175	202	224	23,5

SELECTION

DIN

European type



The ABSEL **SELECTION** batteries are designed to offer 25% greater performance compared to standard batteries, along with strong vibration resistance and the ability to function effectively across different temperature ranges.



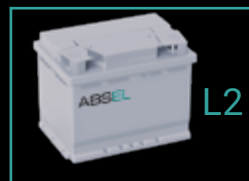
L0



L1



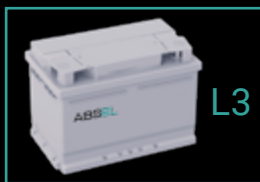
LB1



L2



LB2



L3



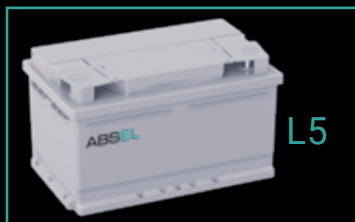
LB3



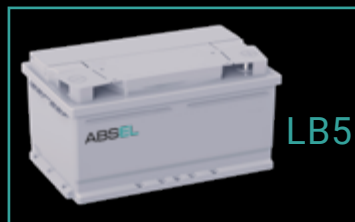
L4



LB4



L5



LB5



L6

Group size	Product number	Ref. No	20 hr (Ah)	CCA EN (A)	CCA SAE (A)	Layout	Terminal	Bottom mount	Length (mm)	Width (mm)	Height except terminal (mm)	Height (mm)	Weight with acid (kg)
L0	QX 542 100	L0.36.030.A	36	300	320	0	1	B13	175	175	190	190	10,0
	QX 542 101	L0.40.034.A	40	340	360	0	1	B13	175	175	190	190	10,5
L1	QX 542 110	L1.40.033.A	40	330	350	0	1	B13	207	175	190	190	11,5
	QX 542 111	L1.40.033.B	40	330	350	1	1	B13	207	175	190	190	11,5
	QX 542 112	L1.44.030.A	44	300	320	0	1	B13	207	175	190	190	11,4
	QX 542 113	L1.44.030.B	44	300	320	1	1	B13	207	175	190	190	11,4
	QX 542 114	L1.44.036.A	44	360	400	0	1	B13	207	175	190	190	11,7
	QX 542 115	L1.44.036.B	44	360	400	1	1	B13	207	175	190	190	11,7
	QX 542 810	LB1.40.033.A	40	330	350	0	1	B13	207	175	175	175	11,0
LB1	QX 542 811	LB1.40.033.B	40	330	350	1	1	B13	207	175	175	175	11,0
	QX 542 812	LB1.44.036.A	44	360	400	0	1	B13	207	175	175	175	11,4
L2	QX 542 813	LB1.44.036.B	44	360	400	1	1	B13	207	175	175	175	11,4
	QX 542 120	L2.45.036.A	45	360	400	0	1	B13	242	175	190	190	12,0
	QX 542 121	L2.45.036.B	45	360	400	1	1	B13	242	175	190	190	12,0
	QX 542 122	L2.55.045.A	55	450	480	0	1	B13	242	175	190	190	14,3
	QX 542 123	L2.55.045.B	55	450	480	1	1	B13	242	175	190	190	14,3
	QX 542 124	L2.60.048.A	60	480	500	0	1	B13	242	175	190	190	14,5
	QX 542 125	L2.60.048.B	60	480	500	1	1	B13	242	175	190	190	14,5
	QX 542 126	L2.60.051.A	60	510	540	0	1	B13	242	175	190	190	14,6
	QX 542 127	L2.60.051.B	60	510	540	1	1	B13	242	175	190	190	14,6
	QX 542 820	LB2.55.045.A	55	450	480	0	1	B13	242	175	175	175	13,7
	QX 542 821	LB2.55.045.B	55	450	480	1	1	B13	242	175	175	175	13,7
LB2	QX 542 822	LB2.60.048.A	60	480	500	0	1	B13	242	175	175	175	14,0
	QX 542 823	LB2.60.048.B	60	480	500	1	1	B13	242	175	175	175	14,0
	QX 542 824	LB2.60.051.A	60	510	540	0	1	B13	242	175	175	175	14,1
	QX 542 825	LB2.60.051.B	60	510	540	1	1	B13	242	175	175	175	14,1
	QX 542 130	L3.66.056.A	66	560	600	0	1	B13	278	175	190	190	16,8
L3	QX 542 131	L3.66.056.B	66	560	600	1	1	B13	278	175	190	190	16,8
	QX 542 132	L3.70.058.A	70	580	620	0	1	B13	278	175	190	190	17,3
	QX 542 133	L3.70.058.B	70	580	620	1	1	B13	278	175	190	190	17,3
	QX 542 134	L3.72.058.A	72	580	620	0	1	B13	278	175	190	190	17,3
	QX 542 135	L3.72.058.B	72	580	620	1	1	B13	278	175	190	190	17,3
	QX 542 136	L3.72.064.A	72	640	700	0	1	B13	278	175	190	190	17,7
	QX 542 137	L3.72.064.B	72	640	700	1	1	B13	278	175	190	190	17,7
LB3	QX 542 830	LB3.66.056.A	66	560	600	0	1	B13	278	175	175	175	16,4
	QX 542 831	LB3.66.056.B	66	560	600	1	1	B13	278	175	175	175	16,4
	QX 542 832	LB3.72.058.A	72	580	620	0	1	B13	278	175	175	175	17,1
	QX 542 833	LB3.72.058.B	72	580	620	1	1	B13	278	175	175	175	17,1
	QX 542 834	LB3.72.064.A	72	640	700	0	1	B13	278	175	175	175	17,5
	QX 542 835	LB3.72.064.B	72	640	700	1	1	B13	278	175	175	175	17,5
L4	QX 542 140	L4.80.062.A	80	620	680	0	1	B13	315	175	190	190	19,0
	QX 542 141	L4.80.062.B	80	620	680	1	1	B13	315	175	190	190	19,0
	QX 542 142	L4.80.074.A	80	740	780	0	1	B13	315	175	190	190	20,0
	QX 542 143	L4.80.074.B	80	740	780	1	1	B13	315	175	190	190	20,0
LB4	QX 542 840	LB4.80.062.A	80	620	680	0	1	B13	315	175	175	175	18,5
	QX 542 841	LB4.80.062.B	80	620	680	1	1	B13	315	175	175	175	18,5
	QX 542 842	LB4.80.074.A	80	740	780	0	1	B13	315	175	175	175	19,4
	QX 542 843	LB4.80.074.B	80	740	780	1	1	B13	315	175	175	175	19,4
	QX 542 150	L5.88.064.A	88	640	700	0	1	B13	353	175	190	190	21,2
L5	QX 542 151	L5.88.064.B	88	640	700	1	1	B13	353	175	190	190	21,2
	QX 542 152	L5.90.072.A	90	720	750	0	1	B13	353	175	190	190	21,6
	QX 542 153	L5.90.072.B	90	720	750	1	1	B13	353	175	190	190	21,6
	QX 542 154	L5.100.083.A	100	830	880	0	1	B13	353	175	190	190	22,8
	QX 542 155	L5.100.083.B	100	830	880	1	1	B13	353	175	190	190	22,8
	QX 542 850	LB5.85.064.A	85	640	700	0	1	B13	353	175	175	175	20,5
LB5	QX 542 851	LB5.85.064.B	85	640	700	1	1	B13	353	175	175	175	20,5
	QX 542 852	LB5.90.072.A	90	720	750	0	1	B13	353	175	175	175	21,2
	QX 542 853	LB5.90.072.B	90	720	750	1	1	B13	353	175	175	175	21,2
L6	QX 542 160	L6.110.085.A	110	850	900	0	1	B13	394	175	190	190	25,0

SELECTION EVO

JIS

Asian type



The ABSEL **SELECTION EVO** batteries are designed to offer 25% greater performance compared to standard batteries, along with strong vibration resistance and the ability to function effectively across different temperature ranges. **SELECTION EVO** batteries are characterized by high cranking currents, ensuring reliable vehicle startup under any conditions.

B20 (NS40)



B00
Bottom
mount

B01
Bottom
mount

B24 (NS60)



1 Terminal type

3 Terminal type

D20



D23



B00
Bottom
mount

B01
Bottom
mount

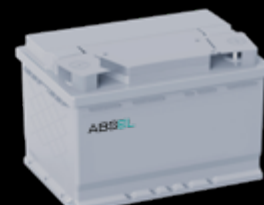
D26 (N50)



B00
Bottom
mount

B01
Bottom
mount

D31 (N70)



Group size	Product number	Ref. No	20 Hr (Ah)	CCA EN (A)	CCA SAE (A)	Layout	Terminal	Bottom mount	Length (mm)	Width (mm)	Height except terminal (mm)	Height (mm)	Weight with acid (kg)
B20 (NS40)	QX 543 200	B20.42.035.E	42	350	390	0	3	B00	196	134	202	222	10,3
	QX 543 201	B20.42.035.F	42	350	390	1	3	B00	196	134	202	222	10,3
	QX 543 202	B20.42.035.G	42	350	390	0	3	B01	196	134	202	222	10,3
	QX 543 203	B20.42.035.H	42	350	390	1	3	B01	196	134	202	222	10,3
B24 (NS60)	QX 543 240	B24.55.045.A	55	450	480	0	1	B00	237	127	201	222	13,2
	QX 543 241	B24.55.045.B	55	450	480	1	1	B00	237	127	201	222	13,2
	QX 543 242	B24.55.045.E	55	450	480	0	3	B00	237	127	201	222	13,2
	QX 543 243	B24.55.045.F	55	450	480	1	3	B00	237	127	201	222	13,2
D20	QX 543 204	D20.55.045.C	55	450	480	0	1	B01	203	175	183	202	12,6
	QX 543 205	D20.55.045.D	55	450	480	1	1	B01	203	175	183	202	12,6
D23	QX 543 206	D23.68.060.A	68	600	650	0	1	B00	232	173	204	225	16,25
	QX 543 230	D23.68.060.B	68	600	650	1	1	B00	232	173	204	225	16,25
	QX 543 231	D23.68.060.C	68	600	650	0	1	B01	232	173	204	225	16,25
	QX 543 232	D23.68.060.D	68	600	650	1	1	B01	232	173	204	225	16,25
	QX 543 233	D26.75.064.A	75	640	680	0	1	B00	260	173	204	225	17,8
	QX 543 260	D26.75.064.B	75	640	680	1	1	B00	260	173	204	225	17,8
D26 (N50)	QX 543 261	D26.75.064.C	75	640	680	0	1	B01	260	173	204	225	17,8
	QX 543 262	D26.75.064.D	75	640	680	1	1	B01	260	173	204	225	17,8
	QX 543 263	D26.80.066.A	80	660	720	0	1	B00	260	173	204	225	19,0
	QX 543 264	D26.80.066.B	80	660	720	1	1	B00	260	173	204	225	19,0
	QX 543 265	D26.80.066.C	80	660	720	0	1	B01	260	173	204	225	19,0
	QX 543 266	D26.80.066.D	80	660	720	1	1	B01	260	173	204	225	19,0
D31 (N70)	QX 543 310	D31.100.085.C	100	850	900	0	1	B01	306	175	202	224	24,0
	QX 543 311	D31.100.085.D	100	850	900	1	1	B01	306	175	202	224	24,0

SELECTION EVO

DIN

European type



The ABSEL **SELECTION EVO** batteries are designed to offer 25% greater performance compared to standard batteries, along with strong vibration resistance and the ability to function effectively across different temperature ranges. **SELECTION EVO** batteries are characterized by high cranking currents, ensuring reliable vehicle startup under any conditions.



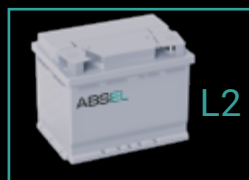
L0



L1



LB1



L2



LB2



L3



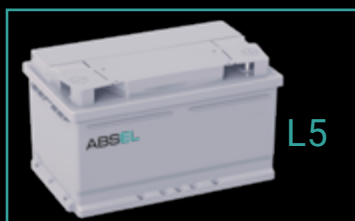
LB3



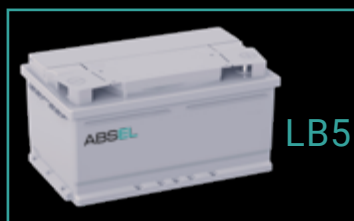
L4



LB4



L5



LB5



L6

Group size	Product number	Ref. No	20 Hr (Ah)	CCA EN (A)	CCA SAE (A)	Layout	Terminal	Bottom mount	Length (mm)	Width (mm)	Height except terminal (mm)	Height (mm)	Weight with acid (kg)
L0	QX 543 100	L0.44.040.A	44	400	430	0	1	B13	175	175	190	190	11,0
L1	QX 543 110	L1.50.042.A	50	420	450	0	1	B13	207	175	190	190	12,8
	QX 543 111	L1.50.042.B	50	420	450	1	1	B13	207	175	190	190	12,8
	QX 543 112	L1.55.054.A	55	540	600	0	1	B13	207	175	190	190	13,3
	QX 543 113	L1.55.054.B	55	540	600	1	1	B13	207	175	190	190	13,3
	QX 543 810	LB1.50.042.A	50	420	450	0	1	B13	207	175	175	175	12,3
LB1	QX 543 811	LB1.50.042.B	50	420	450	1	1	B13	207	175	175	175	12,3
	QX 543 812	LB1.55.054.A	55	540	600	0	1	B13	207	175	175	175	13,0
	QX 543 813	LB1.55.054.B	55	540	600	1	1	B13	207	175	175	175	13,0
L2	QX 543 120	L2.60.054.A	60	540	600	0	1	B13	242	175	190	190	14,9
	QX 543 121	L2.60.054.B	60	540	600	1	1	B13	242	175	190	190	14,9
	QX 543 122	L2.60.061.A	60	610	650	0	1	B13	242	175	190	190	15,5
	QX 543 123	L2.60.061.B	60	610	650	1	1	B13	242	175	190	190	15,5
	QX 543 124	L2.63.064.A	63	640	680	0	1	B13	242	175	190	190	15,8
	QX 543 125	L2.63.064.B	63	640	680	1	1	B13	242	175	190	190	15,8
LB2	QX 543 820	LB2.60.054.A	60	540	600	0	1	B13	242	175	175	175	14,5
	QX 543 821	LB2.60.054.B	60	540	600	1	1	B13	242	175	175	175	14,5
	QX 543 822	LB2.63.064.A	63	640	680	0	1	B13	242	175	175	175	15,5
	QX 543 823	LB2.63.064.B	63	640	680	1	1	B13	242	175	175	175	15,5
L3	QX 543 130	L3.75.072.A	75	720	750	0	1	B13	278	175	190	190	18,2
	QX 543 131	L3.75.072.B	75	720	750	1	1	B13	278	175	190	190	18,2
	QX 543 132	L3.78.078.A	78	780	830	0	1	B13	278	175	190	190	18,8
	QX 543 133	L3.78.078.B	78	780	830	1	1	B13	278	175	190	190	18,8
	QX 543 830	LB3.75.072.A	75	720	750	0	1	B13	278	175	175	175	17,8
LB3	QX 543 831	LB3.75.072.B	75	720	750	1	1	B13	278	175	175	175	17,8
	QX 543 832	LB3.78.078.A	78	780	830	0	1	B13	278	175	175	175	18,5
	QX 543 833	LB3.78.078.B	78	780	830	1	1	B13	278	175	175	175	18,5
L4	QX 543 140	L4.90.085.A	90	850	900	0	1	B13	315	175	190	190	21,5
	QX 543 141	L4.90.085.B	90	850	900	1	1	B13	315	175	190	190	21,5
LB4	QX 543 840	LB4.85.080.A	85	800	850	0	1	B13	315	175	175	175	20,0
	QX 543 841	LB4.85.080.B	85	800	850	1	1	B13	315	175	175	175	20,0
L5	QX 543 150	L5.95.085.A	95	850	900	0	1	B13	353	175	190	190	22,8
	QX 543 151	L5.95.085.B	95	850	900	1	1	B13	353	175	190	190	22,8
	QX 543 152	L5.100.090.A	100	900	950	0	1	B13	353	175	190	190	23,2
	QX 543 153	L5.100.090.B	100	900	950	1	1	B13	353	175	190	190	23,2
LB5	QX 543 850	LB5.95.085.A	95	850	900	0	1	B13	353	175	175	175	22,3
	QX 543 851	LB5.95.085.B	95	850	900	1	1	B13	353	175	175	175	22,3
L6	QX 543 160	L6.110.092.A	110	920	970	0	1	B13	394	175	190	190	26,2

AGM TECHNOLOGY

PLATINUM AGM



ABSEL **PLATINUM AGM** batteries are specifically engineered to handle the frequent cycling and higher power requirements that come with Start-Stop systems and regenerative braking.

AGM (Absorbent Glass Mat) technology is a type of battery construction where the electrolyte is absorbed in a fiberglass mat, rather than being free-flowing as in traditional flooded-cell batteries. This design offers several advantages, including

improved resistance to vibration and deep cycling, lower self-discharge rates, and the ability to provide high bursts of power.

Due to its special internal construction and Valve Regulated Lead Acid (VRLA) technology, **PLATINUM AGM** batteries can withstand three times more charge cycles and have a higher charge capacity compared to conventional batteries.



KEY ADVANTAGES



Rapid charge acceptance



Rapid charge acceptance
Performance exceeds regular
batteries by 40%



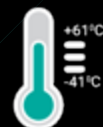
Safe and maintenance-free
design with a pressure-regulating
system/давления



Enhanced grid technology with
calcium (Ca) alloy



300% increased charge cycle
lifespan



High performance in a wide
temperature range



Increased resistance to vibration

ABSEL
PREMIUM BATTERIES

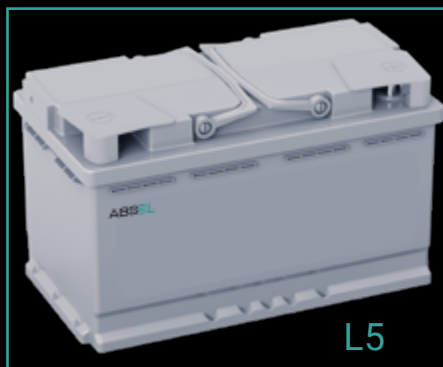
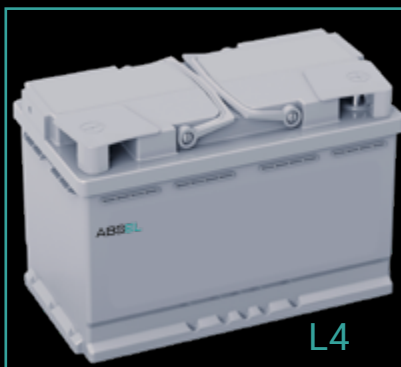
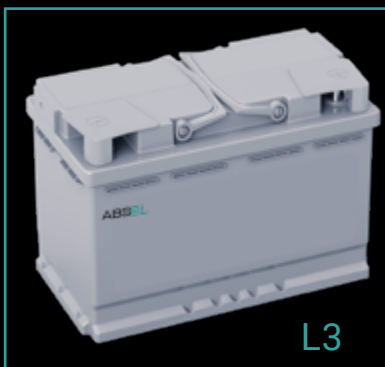
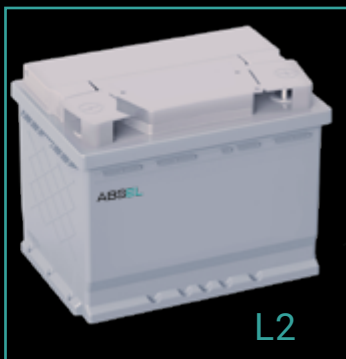
PLATINUM AGM

DIN

European type



The ABSEL **PLATINUM AGM** battery range is designed for use in vehicles equipped with Start-Stop systems and regenerative braking.



Group size	Product number	Ref. No	20 Hr (Ah)	CCA EN (A)	CCA SAE (A)	Layout	Terminal	Bottom mount	Length (mm)	Width (mm)	Height except terminal (mm)	Height (mm)	Weight with acid (kg)
L1	QX 540 505	AGM.L1.50.056.A	50	560	600	0	1	B13	207	175	190	190	152
L2	QX 540 504	AGM.L2.60.068.A	60	680	720	0	1	B13	242	175	190	190	180
L3	QX 540 503	AGM.L3.70.076.A	70	760	800	0	1	B13	278	175	190	190	205
L4	QX 540 502	AGM.L4.80.080.A	80	800	850	0	1	B13	315	175	190	190	235
L5	QX 540 501	AGM.L5.95.090.A	95	900	950	0	1	B13	353	175	190	190	265
L6	QX 540 500	AGM.L6.105.095.A	105	950	1010	0	1	B13	394	175	190	190	300

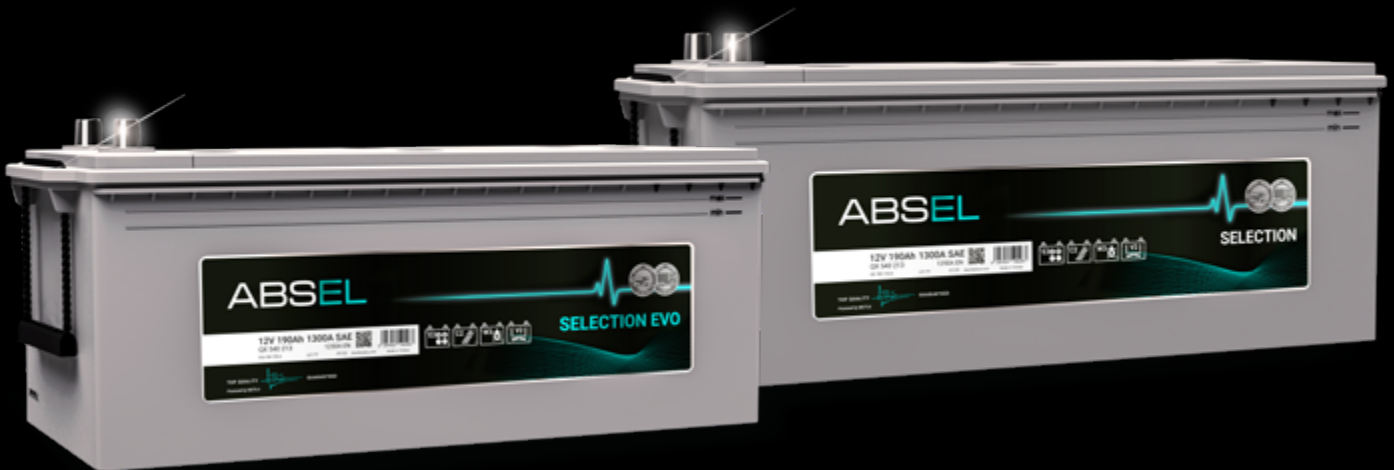


ABSEL
PREMIUM BATTERIES





ADVANCED BATTERIES
**FOR TRUCKS
AND HEAVY EQUIPMENT**



ADVANCED BATTERIES

WITH LIQUID ELECTROLYTE

SELECTION | SELECTION EVO

The ABSEL **SELECTION** и **SELECTION EVO** batteries are manufactured using SLI technology and designed for commercial and heavy-duty commercial transportation.

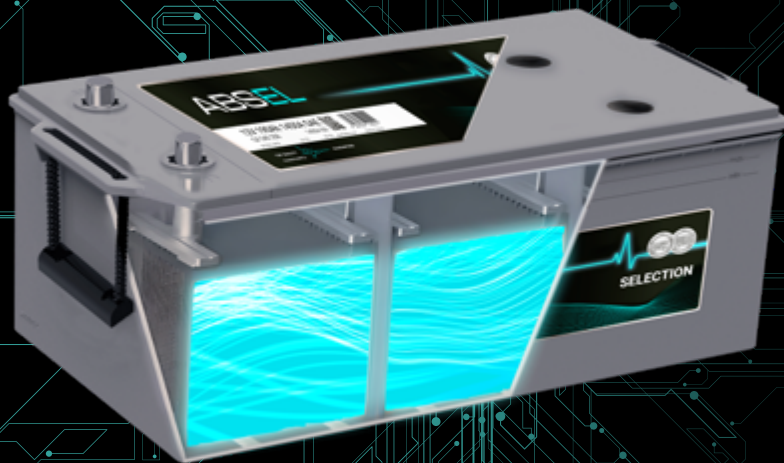
Their high vibration resistance ensures excellent performance in demanding operating conditions. Thanks to the Ca-Ca alloy grids, they are maintenance-free batteries and do not require additional care under proper operating conditions.

Additionally, the batteries are distinguished by their high safety due to a sealed safe cover with a central gas venting system and built-in flame arrestors.

The technologies and materials used allow for a storage period of up to 18 months under favorable conditions.



KEY ADVANTAGES



High performance over a wide temperature range



Increased vibration resistance



MAINTENANCE
FREE

Safe and maintenance-free construction



Advanced technology of grids with calcium (Ca) alloy

SELECTION

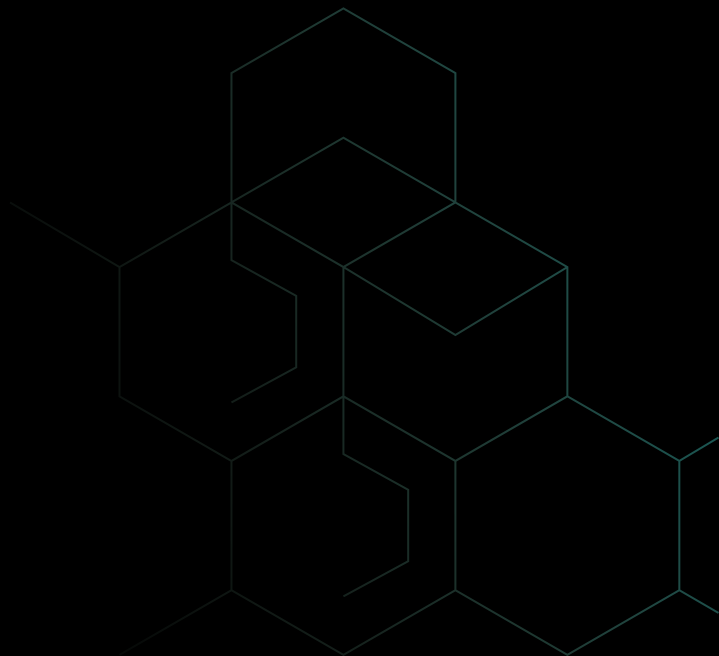


The ABSEL **SELECTION** battery range is designed for commercial and heavy-duty commercial transportation.

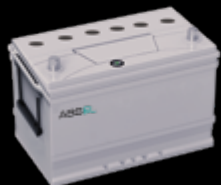
SELECTION EVO



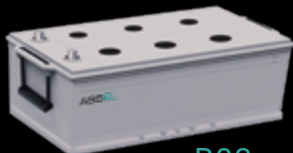
The ABSEL **SELECTION EVO** battery range, designed for commercial and heavy-duty commercial transportation, stands out with its increased cranking currents.



C13



D4

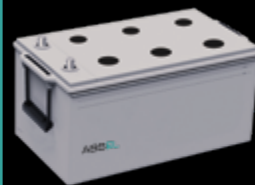


B03
Bottom
mount



B00
Bottom
mount

D6



GR31



1 Terminal Type

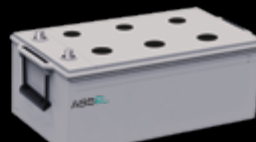


8 Terminal Type

D5



B03
Bottom
mount



B00
Bottom
mount

SELECTION

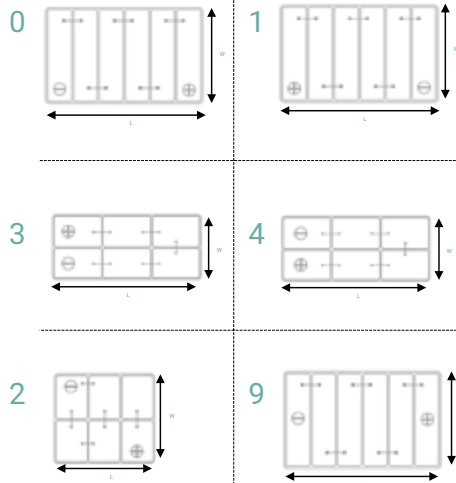
Group size	Product number	Ref. No	20 Hr (Ah)	CCA EN (A)	CCA SAE (A)	Layout	Terminal	Bottom mount	Length (mm)	Width (mm)	Height except terminal (mm)	Height (mm)	Weight with acid (kg)
C13	QX 547 130	2C13.105.076.F	105	760	800	0	1	B03	347	175	213	235	26,0
	QX 547 131	2C13.105.076.G	105	760	800	1	1	B03	347	175	213	235	26,0
D4 (TYPE A)	QX 547 040	D4.120.080.A	120	800	850	3	1	B03	513	189	195	223	33,5
	QX 547 041	D4.120.080.B	120	800	850	3	1	B00	513	189	195	223	33,5
	QX 547 042	D4.135.095.A	135	950	1000	3	1	B03	513	189	195	223	35,7
	QX 547 043	D4.135.095.B	135	950	1000	3	1	B00	513	189	195	223	35,7
	QX 547 050	D5.150.100.A	150	1000	1050	3	1	B03	518	223	195	223	40,5
	QX 547 051	D5.150.100.B	150	1000	1050	3	1	B00	513	223	195	223	40,5
	QX 547 052	D5.165.110.A	165	1100	1150	3	1	B03	513	223	195	223	43,2
D5 (TYPE B)	QX 547 053	D5.165.110.B	165	1100	1150	3	1	B00	513	223	195	223	43,2
	QX 547 054	D5.170.110.A	170	1100	1150	3	1	B03	513	223	195	223	43,5
	QX 547 055	D5.170.110.B	170	1100	1150	3	1	B00	513	223	195	223	43,5
	QX 547 056	D5.180.120.A	180	1200	1250	3	1	B03	513	223	195	223	46,5
	QX 547 057	D5.180.120.B	180	1200	1250	3	1	B00	513	223	195	223	46,5
	QX 547 058	D5.190.125.A	190	1250	1300	3	1	B03	518	223	195	223	47,5
	QX 547 059	D5.190.125.B	190	1250	1300	3	1	B00	513	223	195	223	47,5
D6 (TYPE C)	QX 547 060	D6.200.125.B	200	1250	1300	3	1	B00	518	273	216	242	55,5
	QX 547 061	D6.225.125.B	225	1250	1300	3	1	B00	518	273	216	242	60,0
	QX 547 062	D6.225.140.B	225	1400	1450	3	1	B00	518	273	216	242	60,5
	QX 547 063	D6.240.150.B	240	1500	1600	3	1	B00	518	273	216	242	61,5
GR31	QX 547 310	GR31.105.076.D	105	760	800	9	1	B00	328	171	220	241	25,0
	QX 547 311	GR31.105.076.E	105	760	800	9	8	B00	328	171	220	241	25,0
	QX 547 312	GR31.105.090.D	105	900	950	9	1	B00	328	171	220	241	25,5
	QX 547 313	GR31.105.090.E	105	900	950	9	8	B00	328	171	220	241	25,5

SELECTION EVO

Group size	Product number	Ref. No	20 Hr (Ah)	CCA EN (A)	CCA SAE (A)	Layout	Terminal	Bottom mount	Length (mm)	Width (mm)	Height except terminal (mm)	Height (mm)	Weight with acid (kg)
GR31	QX 548 310	GR31.115.100.D	115	1000	1050	9	1	B00	328	171	220	241	26,5
	QX 548 311	GR31.115.100.E	115	1000	1050	9	8	B00	328	171	220	241	26,5
D4 (TYPE A)	QX 548 040	SD4.145.095.A	145	950	1000	3	1	B03	513	189	195	223	38,0
	QX 548 041	SD4.145.095.B	145	950	1000	3	1	B00	513	189	195	223	38,0
D5 (TYPE B)	QX 548 050	SD5.190.120.A	190	1200	1300	3	1	B03	513	223	195	223	48,5
	QX 548 051	SD5.190.120.B	190	1200	1300	3	1	B00	513	223	195	223	48,5
D6 (TYPE C)	QX 548 052	SD6.200.120.B	200	1200	1250	3	1	B00	518	273	216	242	55,0
	QX 548 060	SD6.225.125.B	225	1250	1300	3	1	B00	518	273	216	242	59,0
	QX 548 061	SD6.250.145.B	250	1450	1500	3	1	B00	518	273	216	242	63,0

TECHNICAL DATA

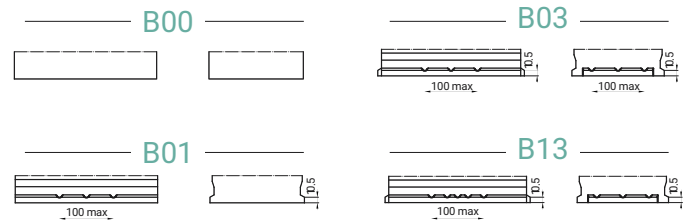
POLARITY



TERMINAL



BOTTOM MOUNTING







EXPLORE THE WORLD OF NEW ENERGY!



EXCEPTIONAL FEATURES

- Access to modern battery technology
- High vibration resistance and long service life
- Exceptional performance in harsh climatic conditions
- Safe maintenance-free design



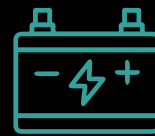
HIGH QUALITY

- Deep automation and modern production
- The level of production defects is less than 0.2%



SUPPLY STABILITY

- The stock of the most popular models is always available
- In-house logistics



WIDE ASSORTMENT

- Wide assortment for passenger cars and heavy-duty commercial vehicles



ABSEL

PREMIUM BATTERIES

HEAD OFFICE



Jebel Ali Free Zone South, Dubai, UAE
+971 50 896 0071
www.abselparts.com
info@abselparts.com

MANUFACTURING COORDINATION CENTER



No:19/6 Mahmutbey, Taşocağı Yolu, Entrance C1
Floor:17 Office:52, Bağcılar, 34218 Istanbul, Turkey
+90 (539) 926 93 36 | +90 212 92440 50
info@abselparts.com

DISTRIBUTION NETWORK

EUROPE | EUROPEAN UNION, TURKEY



Max-Kaiser-Str. 60, 97424, Germany
+49 176 362 250 48
eu-sales@abselparts.com

CIS | BELARUS, KAZAKHSTAN, KYRGYZSTAN, RUSSIA, TAJIKISTAN, UZBEKISTAN



17 Butlerova Str., office 4045 Moscow
8-800-101-30-20
cis-sales@abselparts.com

SOUTH CAUCASUS | AZERBAIJAN, GEORGIA, ARMENIA



N 263 Rustavi Highway, Krtsanisi district, Tbilisi, Georgia
+995 595 16 16 07
sc-sales@abselparts.com

MIDDLE EAST AND NORTH AFRICA | EGYPT, JORDAN, ISRAEL, KUWAIT, MAROCCO, LEBANON, TUNISIA, UAE



Jebel Ali Free Zone South, Dubai, UAE
+971 50 896 0071
mena-sales@abselparts.com



abselbattery.com